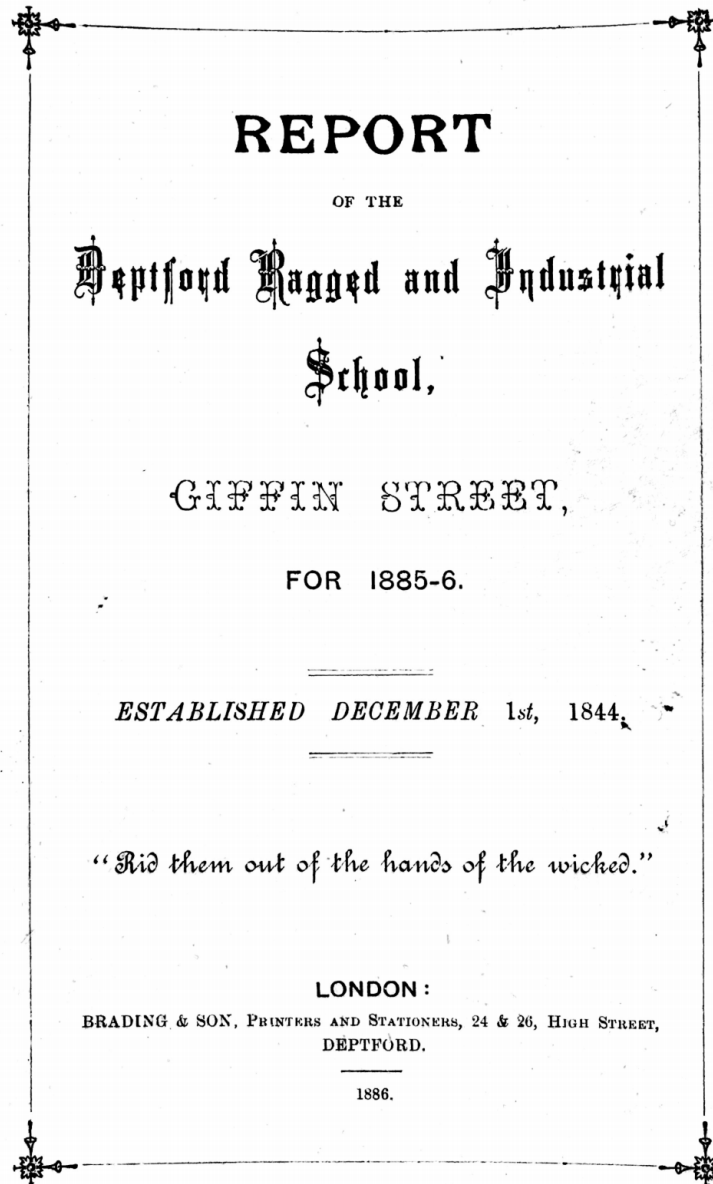


Historical source: excerpts from 1885 report



during that month was about 50. In June, however, the summer weather coming, the attendance gradually decreased, but still a fair average was maintained until July 30th, when the Institute was closed for the summer, about 120 Members having been enrolled. The Institute is open every evening from 7.30 to 9.45, when a short devotional meeting is held for those who desire to stay. The following is the programme—

Monday—Singing, Reading, Writing, Arithmetic.

Tuesday—Gymnasium Instruction.

Wednesday—Violin Class (Mr. HENRY BOWER, Hon. Instructor)

Thursday—Chess Club, (Mr. W. R. SMITH, ex-president).

(Mr. BANKS, President).

Friday—Gymnasium Instruction (Messrs. F. AND A. BOWER).

Saturday—Open night.

Gymnasium open every evening. Reading Room with daily and weekly papers. Library of 160 Vols. Chess, Draughts, Dominoes, &c. Coffee Room.

The chief amusement is, of course, the Gymnasium, to which new horizontal and parallel bars, dumb bells, &c., have been added through the generous grant of £10 from the Metropolitan Public Gardens Association. In other branches it is difficult permanently to interest the lads, as few have any great desire to improve themselves mentally, yet the influences under which they are brought, cannot be without beneficial result. Some Lads who had left the Sunday School have been, by means of the Institute, induced to join the Bible Class.

Our great need now is of two or three gentlemen interested in Lads, who would give one evening every week to lead them in any amusement or interesting occupation such as Wood Carving, Microscope, Gymnasium, Chess, &c.

GIFFIN STREET WORKING LADS' INSTITUTE.

1885-6.

<i>Dr.</i>	£ s. d.	<i>Cr.</i>	£ s. d.
To Grant from Metropolitan Public Gardens Association for Apparatus.....	10 0 0	By Gymnasium Apparatus	9 8 7
„ Members' Subscriptions	4 3 8	„ Stationery and Printing	2 4 1
„ W. Kersey, Esq., per Mr. A. Kemp.....	0 5 0	„ Papers	0 15 0
„ Profit on Refreshments	1 1 4	„ Attendant's Salary.....	1 18 6
	£15 10 0	„ Balance	1 3 10
			£15 10 0

BOOT CLUB.

1885-6.

<i>Dr.</i>	£ s. d.	<i>Cr.</i>	£ s. d.
To Balance in hand	6 2 0	By Cash to Mr. Osborn for Boots supplied to the Children for the 12 months ending 30th September, 1886.....	3 16 6
„ Cash received from Members for the 12 months ending 30th September, 1886	3 12 3	„ Paid out to Members owing to distress ..	0 1 10
„ Cash from the Secretary in payment of Stationery and advances of 2d. in the 1s. to the children to September, 1885...	3 0 4	„ To General Account ..	5 12 9
	£12 14 7	„ Balance in hand.....	3 3 6
			£12 14 7

MOTHERS' MEETING, PROVIDENT FUND, MATERNITY SOCIETY, BOOT AND COAL CLUB.

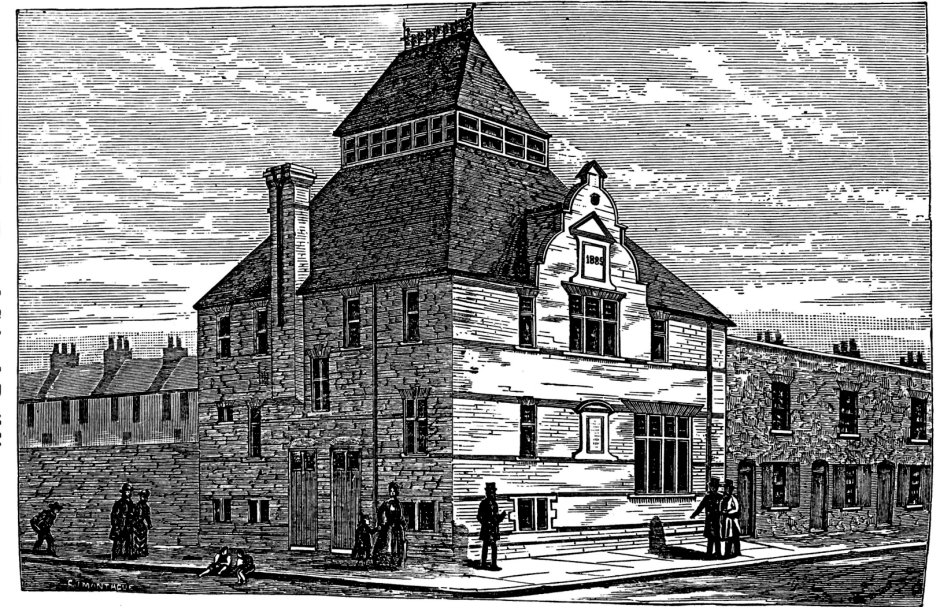
<i>Dr.</i>	£ s. d.	<i>Cr.</i>	£ s. d.
To Balance brought forward	1 2 11	By Clothing and Materials	13 5 8
„ Women's Deposits for Clothing	11 10 1	„ Coals and Boots	5 9 3½
„ „ „ for Boots and Coals...	5 1 2	„ Dorcas.....	0 13 5½
„ Subscriptions	1 12 0	„ Stationery	0 5 6
„ Grant from Committee	4 5 1½	„ Fuel	0 5 0
	£23 11 3½	„ Balance in hand	3 12 4½
			£23 11 3½

DEPTFORD RAGGED SCHOOL PENNY BANK.

1885.

<i>Dr.</i>	£ s. d.	<i>Cr.</i>	£ s. d.
January 1 To Balance from 1884...	18 6 2	Dec 31. By Withdrawals	82 17 3
December 31 „ Deposits	82 16 9	„ Interest allowed for 1884.	0 4 3
„ „ Interest for 1884	0 13 0	„ Balance	
„ „ Fines for New Books...	0 6 4	„ Due to Depositors £16 9 10	
	£102 2 3	„ Reserve Fund.....	2 10 11
			£102 2 3

OPENED BY H.R.H. PRINCESS LOUISE, ON MARCH 12th, 1886.



The following are the operations at present
carried on :

- Sunday* —MORNING SCHOOL, 10.30 a.m.
AFTERNOON SCHOOL, 3 p.m.
ADULT SERVICE, 4.15 p.m.
EVENING SCHOOL, 6.30 p.m.
- Monday* —GIRLS' SEWING CLASS, 7 p.m. (in con-
nection with which is a Provident Fund.
WORKING LADS' INSTITUTE, 7.30 p.m.
- Tuesday* —CHILDREN'S SERVICE, 7 p.m.
PENNY BANK, 8 p.m.
BOOT CLUB, 8 p.m.
PROVIDENT DISPENSARY, 8 p.m.
WORKING LADS' INSTITUTE, 7.30 p.m.
- Wednesday* —MOTHERS' MEETING (in connection with
which is a Provident Fund), 7 p.m.
WORKING LADS' INSTITUTE, 7.30 p.m.
- Thursday* —WORKING LADS' INSTITUTE, 7.30 p.m.
BAND OF HOPE, 7.30 p.m.
- Friday* —WORKING LADS' INSTITUTE, 7.30 p.m.
- Saturday* —WORKING LADS' INSTITUTE, 7.30 p.m.

The Treasurer of the BOOT CLUB reports—

The takings are now very small there being only about 40 members on the books, and this year we have only supplied 21 pairs of Boots.

The second-hand clothing gifts have lessened our numbers and now only the more respectable members of the Giffin Street neighbourhood, who do not care for second-hand things, are our customers.

The BAND OF HOPE Superintendent, Mr. Bambery writes—

The meetings are occupied by Singing and Recitations. Addresses are given of an instructive and entertaining character by friends in connection with the Band of Hope Union and others

The object of the Band of Hope is to influence the young people in favour of Temperance, founded upon Christian principles, and it is our aim to continue that influence as they grow older, hence there are many in various employments, viz.—“Service, engaged in shops, street hawkers, &c., &c.” We have had the satisfaction of knowing that many have proved their firm adherence to these principles under very trying temptations. A portion of our Band of Hope attended the summer demonstration at the Crystal Palace.

An entertainment was given at the School on the evening of October 21st, upwards of 200 children were present, and a number of the parents, some of them have since expressed to me their pleasure at that meeting, and their entire sympathy in the work attempted by the Band of Hope.

Number of regular members on the Books 167.